

**UCLA****Pritzker Center**  
For Strengthening Children and Families**GOOD RIVER**  
PARTNERS

# Housing Preferences of Young Adults Exiting Foster Care:

## A Guide to Expanding Housing Resources in Los Angeles

### Importance of Transitional Housing

Transitional housing programs (THP) provide support to young people in extended foster care and in the first years after aging out. However, there are not enough THPs for all young people preparing to exit the foster care system to adulthood.

### The TAY Housing Preferences Survey

To guide the development of new THPs, Good River Partners developed the Transition-Age Youth (TAY) Housing Preferences Survey in collaboration with lived experts with experience of the foster care system and child welfare researchers. THP providers and SDMC Consulting supported survey participant recruitment and response management and payments to participants, respectively.

### Experiences of Participants

Nearly all participants had experience living in THPs: 39% in THPs for Non-Minor Dependents (young people in extended foster care between ages 18-20), 23% in THP-Plus for young people ages 18-24 who exited the foster care system, and 13% in both THP types.

More than half of participants faced challenging life experiences: 44% homelessness or housing insecurity, 27% food insecurity, 12% juvenile system involvement, 11% substance abuse/dependency, and 2% commercial sexual exploitation. While 44% of participants reported facing none of these challenging life experiences, 28% faced one, 17% faced two, and 11% faced three or more types of challenging life experiences.

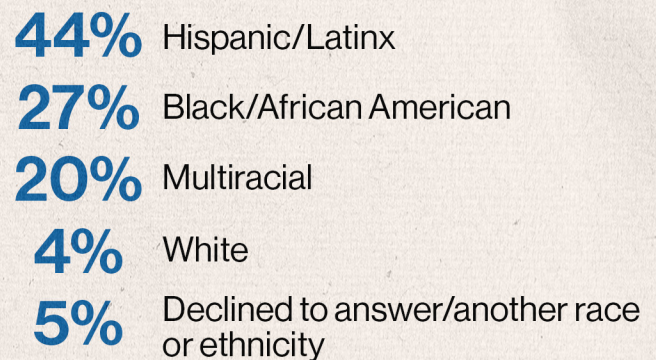
### How prepared did participants feel to transition to life on their own?

On average, young people felt neither unprepared nor prepared to find and secure housing without child welfare system support; while they felt somewhat prepared to live independently. Compared to CalYOUTH Study participants, participants in the current study felt less prepared to achieve housing and independent living goals.

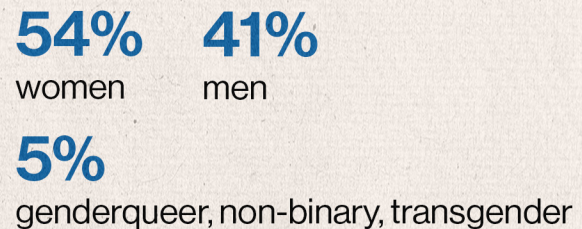
### Who Participated in the Survey?

Survey respondents' average age was 20 years old (range 18-24).

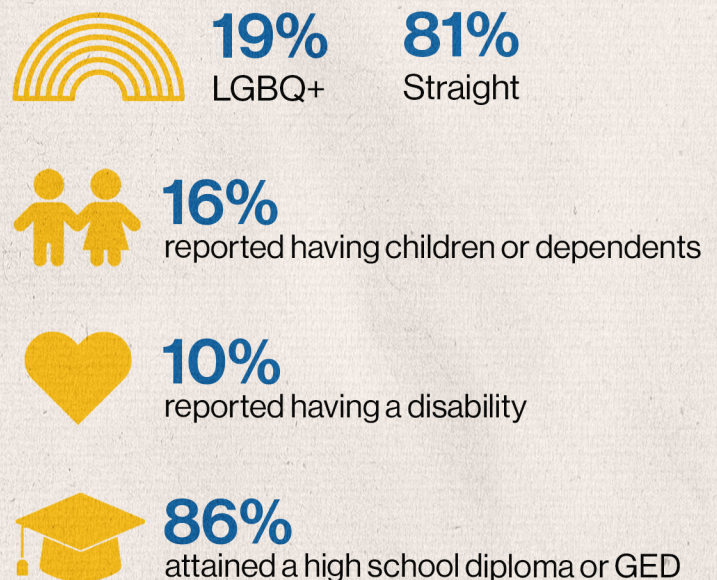
#### Race and Ethnicity



#### Gender



#### Sexual Orientation





## TAY Housing Preferences Findings

Survey participants overwhelmingly prioritized location over amenities (78% vs. 22%).

### The top 3 SPAs participants preferred were:

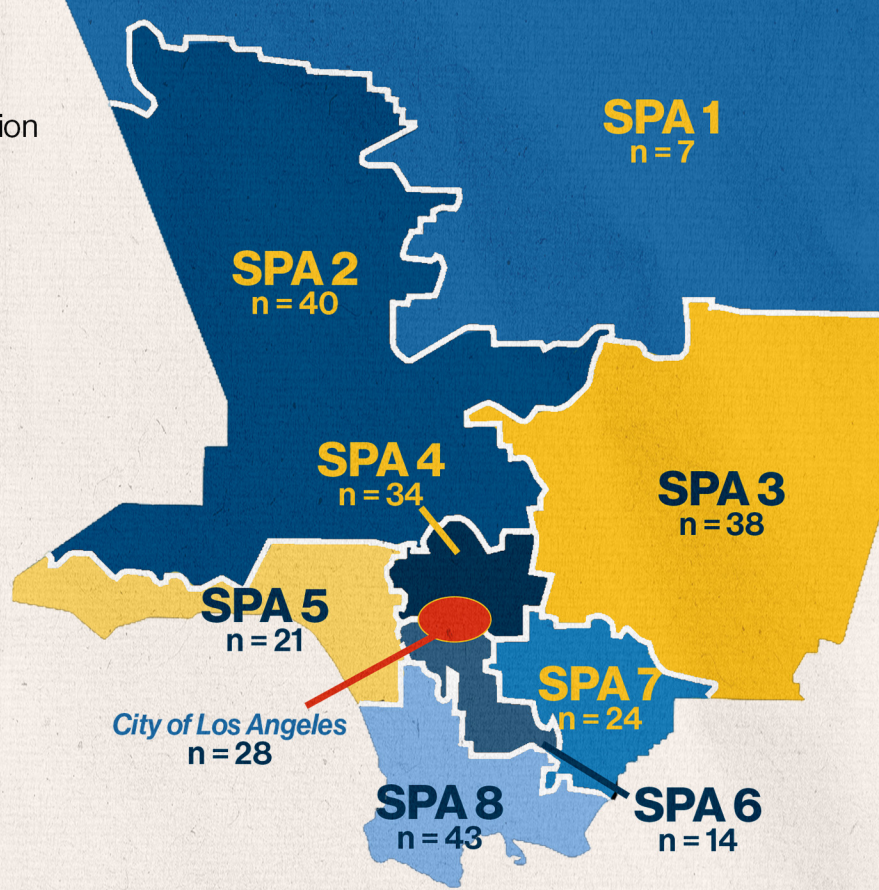
- South Bay/Harbor (SPA 8)
- San Fernando Valley (SPA 2)
- San Gabriel Valley (SPA 3)

### Reasons locations were desirable:

- Family nearby
- Near work/school/job opportunities
- Calm/nice area
- Welcoming people and community

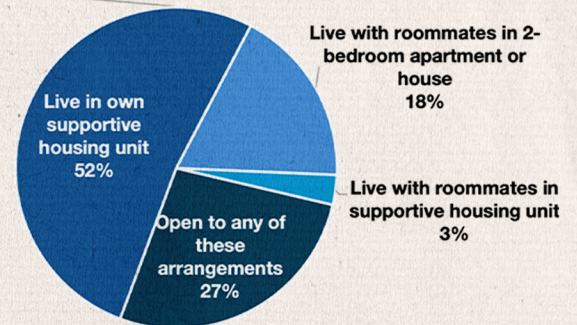
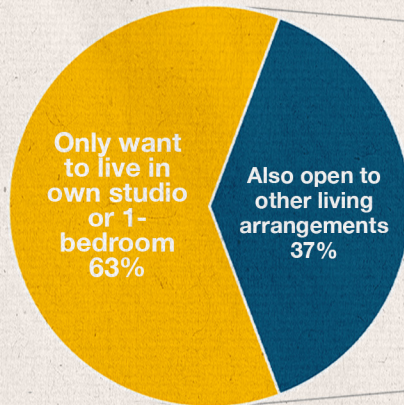
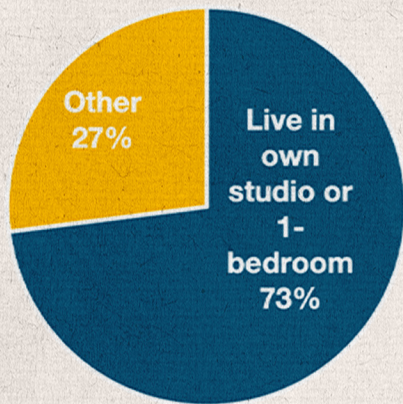
### Amenities of most interest:

- Washer/dryer
- Parking
- Gym
- Furnished



## Ideal Living Arrangements

Among the 73% of respondents (n=167) who want to live alone...



## Case Management

60%

of participants preferred frequent case management (more than once/week or 1-2 times/month)

66% of survey participants expressed a willingness to move for lower rent

## Basic Needs

63% of participants reported unmet basic needs

## Healthcare

88% of participants reported health insurance coverage and most felt confident in accessing healthcare services independently, but only 67% stated they had seen their primary care physician in the past year.

## Barriers to Securing Housing

74 participants searched for housing in the past year. Barriers they faced: 72% rent too high, 61% no/low credit score, 61% income too low, 43% no/limited rental history, 32% no co-signer.